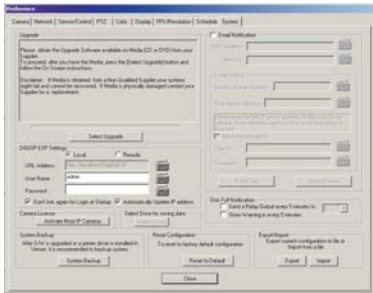


9 System Settings



System Backup

This is the system backup function. Whenever any changes or any software upgrades have been made, you must run this System Backup function to keep these settings. If you do not run this System Backup after you have configured your system or upgraded your software, you will lose all information and upgrades made prior to the system since the last backup function.

Initialization of Resetting to Default

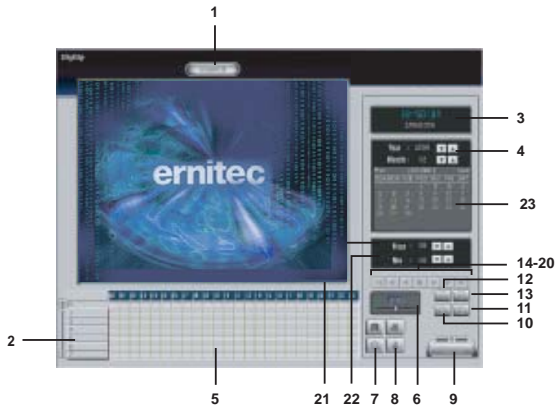
This is the initialization function of the software; use caution when trying to use this function. This function does a complete factory restore on the system. You will not lose any video, but all of your settings and configurations will be lost.

Save Export/Import Setting Values

In the event that a system has to be replaced or you have multiple systems at one site, you can configure one system and export the configuration externally. After you have exported the configuration file, you can import them to other systems running the same software version.

10 Screenshot Diagram

- Current Search Screen** Displays the images that match the search criteria. Up to a maximum of 16 channels can be displayed simultaneously, depending on the screen mode selected. The screen displays the DIGIOP logo on channels with no recording to be shown.
- Camera Number** Displays the Camera Number. You must select the channels you want to search before you can play any video.
- Image Time** Displays the time of the current image.
- Current Archive Date** Displays the day and date that you are viewing.
- Scan Bar** This bar indicates where you are searching on the video graph; you can click and hold this bar to scan through the recorded view. This also tells you where you are searching on playback.
- Playback Control** This slide bar controls the speed on which the video will be played back, either in slow motion or frame skipping.
- Zoom** Allows you to zoom in on video and still images.
- Deinterlacing** This button is located on the Search screen next to the Magnify button (on the bottom right). It is also located on the bottom right of the Image Post Processing Interface, and is labeled "Edge Sensitive Deinterlace." Note: Only when recording mode is interlaced (usually 720x480), is deinterlace an option.
- Tools Icon**
- 9-Division Screen Playback Icon**
- 16-Division Screen Playback Icon**
- Full Screen Playback Icon**
- Quad - Division Screen Playback Icon**
- Go to Start Position**
- Fast Backward Search**
- Replay**
- Pause / Stop**
- Fast Forward Search**
- Search forward one by one**
- Go to Last Position**
- Hour Configuration**
- Minute Configuration**
- Recorded Calendar Displays Month, Year, Current Time & Date.**
 • Note: This calendar shows you the recorded video that you have stored on the system which is marked in RED. Days in white are days that are not recording.

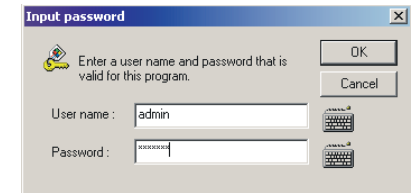


ernitec

Software Quick Start Guide

1 Logging In

- First click the Login icon on the bottom right side of the main screen.
- A dialogue box will then appear and you will have to enter a password for admin.
- Enter a username and password. The default username will be set to admin (leave this username as is). The default password is dg2ad33. After you have entered the password, click the OK button.



You can set other usernames and passwords as well as change the Admin password if desired (tools/configure/display/manage).

Warning: Do Not Lose or Forget This Password. There is no way to recover this password. If you forget your password: Please Contact Your Dealer or Call Customer Support for Assistance.

2 Date, Time and Camera

Date & Time

(To change the date and time, you must first Login as Administrator) This area displays your current date and time... You must set this option manually by double-clicking on the time area.

- Click on the figures that show the date and time on the DIGIOP, the date/time setting box appears.
- Select the desired date and time by using the down-arrow button, and then click the Modify button.



Daylight Saving Time

To set the daylight saving time, the user can select either the equivalent country or the starting and finish time. Both functions can be executed by checking the check box "Automatically adjust clock for daylight saving changes".

• Note: DIGIOP stops recording if the date/time setting has been changed. Click on the Tools Icon and then click the Start Recording button to start recording with new date/time settings. Do not set daylight saving within the Windows environment only set the date/time.



Selecting Camera - Tools/Configure/Camera

Select a camera for desired recording time, motion detection range, image quality, resolution, motion sensitivity, etc.



Enter the installed location of the selected camera. Entered information will be displayed on the screen for the selected camera.

3 Camera Settings

Requested Minimum Sensitivity Value for Recording

Image Size	Entire Movement	Partial Movement
1 Person	0	0
1-2 Persons	0	60 - 80
1-2 Persons	80 - 90	80 - 90
1-2 Persons	90 - 100	90 - 10

• Note: Set the image quality value at greater than 90 when recording wide-view images. The camera noise may not be effectively eliminated if the movement sensitivity value is set at a value over 70, and when there is no movement, the images might be intermittently recorded. Details on Recording Time available on DIGIOP DRM Client CD.

- Entire Movement:** When the entire body moves. Partial Movement: When only the arms or legs move.
- Movement Speed:** Approx. ± 20 compensation of recommended sensitivity value (High speed: max. +20, Low speed: max. -20).
- Number of Persons:** If the number of persons on the screen increases, the motion can be detected at a lower sensitivity level. Adjust the sensitivity value accordingly.
- Camera Noise at Night:** It is recommended to adjust the Recording Time during night time recording to reduce unnecessary recording and save storage space on HDD. For cameras with excessive noise, it is recommended to lower the sensitivity value to avoid unnecessary recording.

Continuous Mode

Stores all images regardless of changes in images captured on camera.

Regardless of the sensitivity of movement selected, DIGIOP records all images captured on all cameras without skipping. This mode takes up more storage space on HDD than when using motion mode.



For maximum storage efficiency, please use the motion mode for normal daily recording operations.

4 Remote Notification



Remote Notification

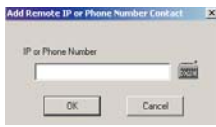
Allows notification of events to DIGIOP Remote Software. DIGIOP can notify DIGIOP Remote Software even when a remote connection is not present. Notifications will be present when Remote Software re-establishes a connection.

- **Note**
DIGIOP will notify the following events to DIGIOP Remote Software:
 - Sensor Event (notifies event or connects channel)
 - Stop / Start Recording
 - Abnormal Camera Input
 - DIGIOP Turn-off or Shut-down (Power off)
 - DIGIOP Rebooting for any reason.
- To get notification from DIGIOP, DIGIOP Remote Software should have an established Internet connection.

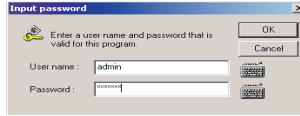
To register IP Address of DIGIOP Remote Software:

1. Click the Add button.
2. Click the keyboard-shaped icon () of dialog box. When the keyboard screen appears, enter the IP Address of the DIGIOP Remote Software.
3. Click the Add button.

- **Note**
 - DIGIOP will notify events to the DIGIOP Remote Software, which is registered in the list.
 - Up to 10 DIGIOP Remote Users can be registered in the list.



5 Connection and Remote Control



Connection Time Limit

To limit the connection time with DIGIOP Remote Software, check the Connection Time Limit. The maximum time limit can be set up to 120 minutes.

Example: To connect and transmit images through DIGIOP Remote Software for only 30 minutes, check the Connection Time Limit and select 30 minutes.

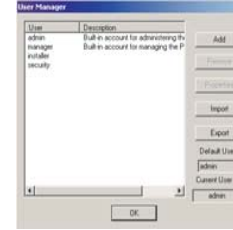
Disconnect when there is no transmission

To stop the transmission within a pre-selected time limit when there is no response due to transmission errors such as noise, place the check on 'Disconnect when No Response' and select the desired time limit. The maximum time limit can be set up to 20 minutes.

Remote Control

Allows remote control of the split screen mode during remote surveillance. Selecting the Customized Functions menu on DIGIOP may not be accessed when the system is remotely controlled by DIGIOP Remote Software.

6 User Management



Register Log-in Users

Registers the Log-in users accessing DIGIOP via Remote Software. Only registered users can transmit and view images using DIGIOP Remote Software.

To Register a New Log-In User:

1. Select the Display tab on the Configure selection box. Click the Manage Button.
2. Click the Add button.
3. The new user name input box with a blinking input cursor appears (shown above).
4. Click the keyboard icon and enter the new user ID on the keyboard screen.
5. Click the OK button.
6. Click on the password input box and the input cursor blinks.

7. Enter the password in the input box using the keyboard screen and then click the OK button. A password can contain up to 50 alpha-numeric characters.
8. Enter the password again in the verification input box.
9. Click the OK button to verify the password.
10. Add privileges to that user as needed.

Delete User

Select the desired user name on the list. Click the Delete button to delete the user name.

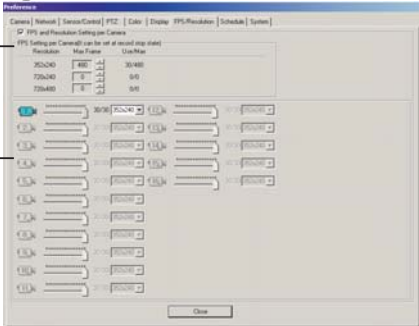
Change Password

Select the desired user name on the name list. Click the Modify button to change the password.

- **Note**
Ports will need to be forwarded on the router for Remote connection. Contact your ISP provider or the IT Technician to forward ports on router.

Feature	Port	TCP/IP or UDP
Log-on	7000	TCP/IP
Live transmission	8000, 8001	TCP/IP
VOD(remote playback) transmission	9000, 9001	TCP/IP
Checking server alive	8002	TCP/IP
Automatic connection When alarm input	8003	TCP/IP
Time synchronization	3000 (multicast protocol port: IP = 230.255.255.255)	TCP
Two-Way Audio	7021	TCP/IP
Event Notification	8875	UDP

7 FPS/Frame Resolution Rate Adjustment



increments of 25 at 352x240, 25 at 720x240, and 16 at 720x480.

Example: If your unit is capable of 100 FPS Recording, then you can set the system to record a maximum of 50 FPS at 352x240, another 25 FPS at 720x240, and top your frame rates out with 25 FPS at 720x480. This gives you a total of 100 FPS. You must equally divide your frame rates for the option to function correctly.

capable of. The box will indicate the total frame rates now being used / total frame rates capable.

2A. This section allows you to set frameres and resolutions by individual cameras. The image below shows Camera 1 set to 7 out of 25 FPS. You may change the frame rates by moving the slide ruler left to right to increase frame rates, or right to left to decrease frame rates.

2B. This is the resolution setting for each individual camera; remember how many frames you set for each resolution. The combined total of frames per camera cannot exceed the total FPS allowable for the system.

Each chip is made up of 4 different channels as follows:

- Chip 1 (Channels 1, 5, 9, 13)
- Chip 2 (Channels 2, 6, 10, 14)
- Chip 3 (Channels 3, 7, 11, 15)
- Chip 4 (Channels 4, 8, 12, 16)

- **Note**
In case the BNC cable is disconnected or recording is stopped in a channel, the frame rate for that channel should be set again.

1. **Enable FPS Setting per Camera** (You must pause recording before you can change or set this feature).

1A. **Resolutions:** These are the resolution settings that the DIGIOP system is capable of using. They are as follows: 352x240, 720x240, and 720x480

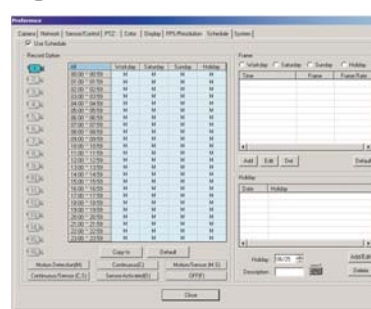
1B. **Max Frame:** This is where you have to set the maximum allowable frame rate per resolution. Click the up arrow to increase your frame rates or click the down arrow to decrease them. On some systems, you can only do

1C. **Use/Max:** This shows you what your current Frame Rate usage is and also shows what your maximum frame rates that the system is capable of.

2. **Recording Performance:** Usage displays the current frame rate usage that the system is now doing.

Example: When you set your frame rate by resolution like you have done above, this will tell you that you are using the entire 100 FPS that the system is

8 Schedule Recordings



Set the recording mode and frame rate of each hour for each day and channel.

1. Use Schedule Mode

Choose whether to use the schedule. When the DIGIOP system is recording, you cannot change or use the schedule mode. Stop the recording first to change the setting value.

- **Note**
Check the Use Schedule Mode checkbox and then click the start recording button to backup the present setting state. The backup value will recover again while the recording stops. The DIGIOP recognizes the holidays which the user has added.

2. Recording Mode Channel

Choose a channel and the present schedule will appear for the appropriate channel in the list box below.

All	Workday	Saturday	Sunday	Holiday
00:00 ~ 00:59	M	M	M	M
01:00 ~ 01:59	M	M	M	M
02:00 ~ 02:59	M	M	M	M
03:00 ~ 03:59	M	M	M	M
04:00 ~ 04:59	M	M	M	M
05:00 ~ 05:59	M	M	M	M
06:00 ~ 06:59	M	M	M	M

Add

Set each time and day for the recording schedule.

1. To add schedule, choose the days and times with the mouse drag.

2. Click the day or time you desire; the entire time for the appropriate day or entire day for appropriate times will be selected. Click 'ALL' and the entire day and time will be selected.
3. Click the Recording Mode to set and the selected cell will change to the selected recording mode.

- **Note:** What is recording mode? The DIGIOP system activates in six kinds of modes as shown.

Motion Detection(M): Records only when there is movement (refer to setting value to see motion sensitivity when there is detection of movement).

Continuous(C): Records all the images and this has nothing to do with the images captured by the camera. The sensor doesn't activate.

M,S: Similar with 'Motion Detection' and activates sensor.

C,S: Similar with 'Continuous' mode and activates sensor.

Sensor-Activated(S): It only records when the sensor is ringing.

OFF(F): The camera does not perform recording and surveillance functions. Be cautious, as the sensor does not ring when the camera is off.

